

For external animal use only.



Flea Adulticide for cats

Reg. No. G2242 (Act 36/1947)

Only for use by or under the supervision of persons registered in terms of or authorized in terms of Section 23(1)(c) of the Veterinary and Para-Veterinary Professions Act, 1982 (Act 19 of 1982)

Store below 30°C in a cool dry place.

Contains: Imidacloprid 10% m/v

Controls fleas on cats, kittens up to 4 kg and rabbits

- Kills fleas on cats and rabbits within 24 hours of treatment and will continue to protect the animals from re-infestation for up to four weeks on cats and up to one week on rabbits.
- Kills fleas before they can lay eggs.
- Larval flea stages are killed in the surroundings of Advantage treated pets.

WARNINGS:

- DO NOT USE ON RABBITS INTENDED FOR HUMAN CONSUMPTION.
- Do not use on rabbits less than 10 weeks of age.
- Handle with care.
- Store below 30°C in a cool, dry place, away from food and feed.
- Keep out of reach of children, uninformed persons and pets.
- Do not allow recently treated rabbits to groom each other, until application site is dry.
- Although this remedy has been extensively tested under a large variety of conditions, failure thereof may ensue as a result of a wide range of reasons. If this is suspected, seek your veterinarian's advice and notify the registration holder.

PRECAUTIONS:

- Avoid contact with skin, eyes or mouth.
- Do not eat, drink or smoke while applying or after application before washing hands thoroughly.
- Prevent contamination of food, food utensils, drinking water, etc.
- Wash hands thoroughly after use.
- Dispose of used tubes safely.
- The solvent in Advantage may mark certain materials including plastics, leather, fabrics and finished surfaces. Make sure Advantage has dried on the treated animals before allowing them contact with these materials.
- Human hypersensitivity reactions: In very rare cases individual skin reactions (e.g. allergies, irritation, tingling) may occur after using this product.

If in the eyes: Hold the eyelids open and flush thoroughly with plenty of water. Seek medical attention if the irritation persists.

If swallowed: Call a physician or Poison Control Centre.

If on the skin: Wash with plenty of soap and water. Seek medical attention if the irritation persists.

Note to the physician:

This is a nicotinic chloride, treat patients symptomatically.

DIRECTIONS FOR USE:

Use only as directed.

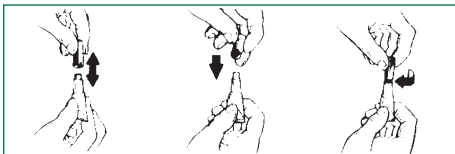
Dosage:

Cats: Use one 0,4 ml tube per cat weighing up to 4 kg.

Rabbits: Use one 0,4 ml tube per rabbit weighing up to 4 kg.

Rabbits weighing more than 4 kg body weight should receive 2 tubes of Advantage.

Hold the applicator tube in an upright position. Pull cap off the tube. Turn the cap around and place the other end of the cap back on the tube. Twist cap to break the seal, then remove the cap from the tube.



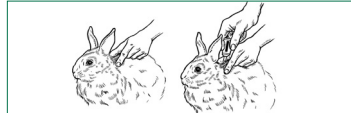
Administration to the cat:

For easy application the animal should be standing. Part the hair on the back of the neck at the base of the cat's skull until the skin is visible. Place the tip of the tube on the skin and squeeze out the contents thoroughly to apply the solution directly onto the skin.



Administration to the rabbit:

Part the hair on the rabbit's neck at the base of the skull until the skin is visible. Place the tip of the tube on the skin and squeeze firmly several times to empty the contents onto the skin.



The formulation is bitter tasting and salivation may be seen for a short time if licked immediately after treatment, so make sure to apply it on the neck at the base of the skull. Do not get this product in your pet's eyes or mouth.

Advantage kills fleas on cats and rabbits within 24 hours of treatment and will continue to protect the animal from further flea infestation for up to four weeks on cats and one week on rabbits. Re-infestation from newly emerged fleas in the environment may occur for six weeks and longer after the treatment is initiated.

In severe flea infestations two treatments 2 - 3 weeks apart should be applied.

Monthly treatments are required for optimal control and prevention of fleas.

Frequent shampooing of the animal may diminish the duration of flea protection, therefore re-application following shampooing would be recommended.

HOW TO CONTROL FLEAS IN THE HOUSE AND YARD

Only a small number of fleas are on animals at any one time. Most of the population will be present as eggs, larvae and pupae in the environment from which newly hatched adult fleas will continuously infest the animals.

Treatment of the animals will kill those fleas actually in contact with the animal as well as flea larvae in the immediate surroundings. To improve the level of flea control, the animal's environment must also be treated.

Fleas and their developmental stages are widespread e.g. in dust, debris, pet's bedding, cracks, carpets and kennels.

The following control measures in addition to Advantage are therefore recommended:

- vacuum carpets (destroys dust).
- clean animal's bedding (by washing and treating with a registered insecticide e.g. Fleegard Reg. No. L6633).

A combination of the above will aid in improving flea control.

LIFE CYCLE OF A FLEA:

1. Adult fleas on your pet can lay several hundreds of eggs during their life cycle.
2. Eggs fall off into the environment.
3. Larvae hatch and feed on debris and the blood rich faeces of the adult fleas.
4. Each larvae spins a cocoon, which is not visible in the pet's environment.
5. New adult fleas can emerge after seven days.
6. Completion of the life cycle may take as little as three weeks or as long as three years.

Registration Holder:

Bayer (Pty) Ltd., Animal Health Division.

Co. Reg. No. 1968/011192/07.

27 Wrench Road, Isando, 1601, South Africa.

Tel: + 27 11 921 5573. Fax: + 27 11 921 5762.

www.bayeranimalhealth.co.za

© is the registered trademark of Bayer AG, Germany.



Bayer HealthCare
Animal Health

22078136 AI
Pro-Print